



ASSEMBLY INSTRUCTIONS

HEAVY DUTY TRANSPORT RACK

ITEM#: TR4496

*Designed for fabrication and transportation of products and materials to the job site.
4,000 lb. capacity (2,000 lbs. per side)*

SIZE: 98.5" x 44" x 66" | w/ casters: 98.5" x 44" x 81"
WEIGHT: 620 lbs.

PARTS FOR ASSEMBLY:

All parts shown below:

- (1) Base
- (1) A-Frame Upright
- (10) Hold Down Bars w/ Racket & Strap

Complete with hardware:

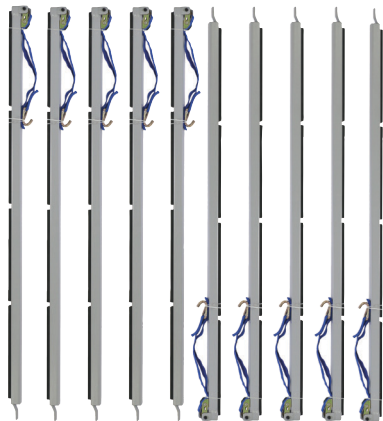
- (8) 1" Nuts
- (8) Lock Washers
- (8) Washers

TOOLS NEEDED:

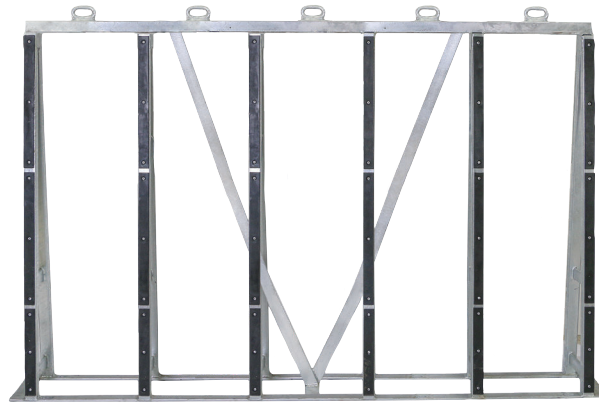
- Combination Wrench
- Forklift
- (Optional) Power Drill

OPTIONAL PARTS:

- (1) Caster Kit:
 - (4) Mounting Pins
 - (4) Caster Stems
 - (16) 3/8" Flange Nuts
 - (16) 1" Bolts



HOLD DOWN BARS



A-FRAME



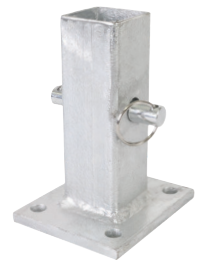
BASE FRAME

CK-4 (OPTIONAL CASTER KIT)

8SB - SWIVEL W/ BRAKE



CASTER STEM & MOUNTING PIN



8R - RIGID



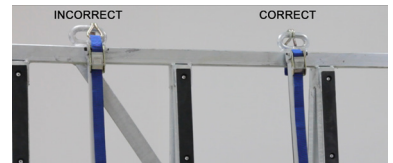
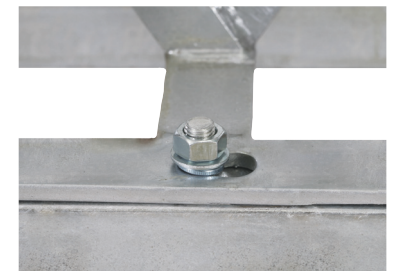
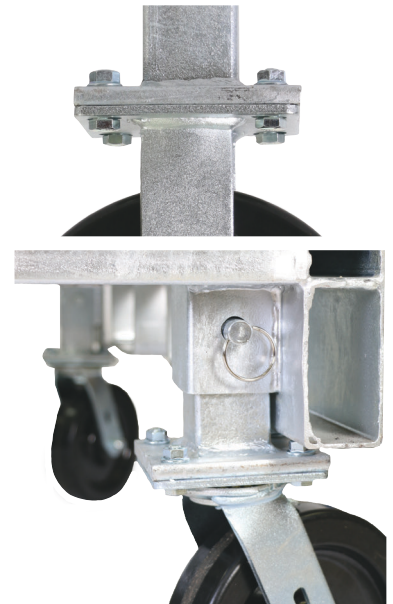
CASTER HARDWARE



ASSEMBLY HARDWARE

Skip Step 1 & 2 if you are not using the Optional Caster Kit [CK-4].

1. Using the hardware provided, attach the Caster Stems to the casters.
2. Using a forklift, lift the base from the ground so you can slide the Caster Stems and 8" Casters (2 swivel & 2 rigid) into the caster holes on the bottom of the base. Use the mounting pin provided to secure the casters into place. Place the base back onto the ground.
3. Remove the nuts, lock washers and washers from the bolts that are welded onto the base and prepare to attach the A-Frame.
4. Using a forklift or multiple people, lift the A-Frame upright onto the base by positioning the keyhole openings on the upright over the bolts that are welded on the base.
5. Replace all washers, lock washers, nuts and tighten all hardware.
6. Add Hold Down Bars into the grooves on the base to keep material in place.
7. Attach the Ratchet & Strap to the loop on the A-Frame by looping it under the bar and attaching it so the curve is under the loop.



Proper securement of hold down bars

WHEN YOU RECEIVE YOUR SHIPMENTS, COMPARE NUMBER OF PIECES RECEIVED WITH YOUR PACKING LIST. IF FURTHER INFORMATION IS REQUIRED PLEASE CALL 800-991-2120 FOR ASSISTANCE.

"We take care of the gear that takes care of you!"

818 Trakk Ln. Woodstock, IL. 60098 // www.readyrack.com // sales@groves.com